



TowCaddy Owner's Instructions and Safety Manual

Contents

- 3 Introduction
- 4 Safety Guidelines
- 7 Opening and Closing Your TowCaddy
- 8 Attaching Wheels
- 6 Installing and Operating Seatpost Hitch
- 7 Securing Golf Bag to TowCaddy
- 8 Hitching TowCaddy to Your Bicycle
- 9 Safety Checklists
- 10 Maintenance and Storage

Congratulations!

You've taken your first step to becoming a more fit and green golfer. TowCaddy has made every effort to ensure your purchase will provide you with many years, many miles and many holes of happy, safe and fun biking and golfing.

Please fax your warranty information to 801.489.7602 to register your product.

IMPORTANT:

IT IS VERY IMPORTANT FOR YOU TO FAMILIARIZE YOURSELF WITH YOUR TOWCADDY BY READING THIS ENTIRE MANUAL BEFORE USE. IF YOU HAVE QUESTIONS, CONTACT TOWCADDY BY PHONE OR EMAIL.

Introduction

Once you've done the initial assembly and read the safety guidelines, you're ready to go! Before towing, be certain your bag straps, wheels, hitch and seat-post connector are securely fastened.

Note: *Any reference to left or right is made as if you were riding, looking forward in direction of travel.*

Safety Guidelines

WARNING!

BICYCLING WITH A TOWCADDY, AND BICYCLING IN GENERAL, CAN BE HAZARDOUS. FAIL TO WEAR A HELMET, OBSERVE TRAFFIC LAWS AND THE SAFETY GUIDELINES IN THIS MANUAL COULD RESULT IN ACCIDENT, SERIOUS INJURY OR DEATH. NEVER RIDE AT NIGHT.

1. Inspect and maintain your bicycle and TowCaddy regularly. Follow the “Safety Checklists” at the end of this manual.
2. **Do not allow passengers on TowCaddy.** TowCaddy is not intended to carry, hold or transport human cargo.
3. Because of the TowCaddy’s additional weight, a bicycle pulling a TowCaddy is heavier and less responsive. Avoid sudden swerving, rocks and curbs. Experiment with the loaded TowCaddy in an area free from traffic and obstruction until you become familiar with it.
4. The minimum hitch distance from ground on an upright bike is 36 inches.
5. The **MAXIMUM** TowCaddy load limit for cargo is **25 lbs (12 kg)** set as low in cradles as possible.
6. Never carry more than one golf bag at a time.

7. Fasten the cart straps securely around golf bag, tie extra webbing to prevent loose ends.
8. Secure all free-hanging items attached to golf bag to prevent movement.
9. Do not pull TowCaddy without hitch and hitch pin being properly attached.
11. Observe recommended speeds: a **MAXIMUM** of **15 mph (24 km/h)** on smooth, straight roads and **5 mph (8 km/h)** or less when turning or on uneven roads.
13. Never pull your TowCaddy with a motorized vehicle.
15. Only use factory-supplied wheels, with the tires inflated to the pressure recommended on the tire side wall. Check pressure before each use. Do not use high-pressure tires.
16. Clamp the hitch securely to the bicycle seat-post. Check for a tight attachment before each ride.
17. Do not make alterations to the TowCaddy. Contact your TowCaddy for replacement of any damaged, worn-out or missing parts.
18. Do not use your TowCaddy on icy roads or when inclement weather makes cycling hazardous.
19. The use of a mirror on your bicycle is recommended.
20. For emergencies, breakdowns or flat tires, pull completely off the road and move to a safe area before doing repairs.

21. Do not attempt to negotiate curbs on your TowCaddy. Avoid potholes, speed bumps, uneven surfaces and rough road. Avoid sudden stops and quick starts. Never attempt to jump while towing a TowCaddy.

WARNING!

TOWCADDYS CAN TIP OVER, WHICH MAY DAMAGE TO THE TOWCADDY AND CAUSE SERIOUS INJURY TO BICYCLE RIDER. AVOID CAUSES OF TIP OVER, ESPECIALLY:

- QUICK STARTS, SUDDEN STOPS, TAKING TURNS TOO FAST AND SWERVING.
- HITTING POTHOLES, CURBS, OTHER ROAD OBSTRUCTIONS
- RIDING ON OR OVER UNEVEN SURFACES
- IMPROPER WHEEL INSTALLATION OR TIRE INFLATION

Installation and Use of Hitch

Nest seatpost between cradles with hitch pointing to rear of bike, hitch post pointing up. Use adjustable wrench to secure bolts tightly. Slide hitch receiver over post, insert locking pin through hole in post and secure U-loop over pin. (Figure 1)

IMPORTANT:

TOOL REQUIRED FOR ASSEMBLY: ADJUSTABLE WRENCH

Opening and Closing Your TowCaddy

To open, rotate handle bar forward away from body until Gravity transfer Joint (GTJ) cap fits over TowCaddy body. (Figure 2)

Tighten and securely clamp GTJ quick release. (Figure 3)

Reverse opening process to close TowCaddy.



figure 1

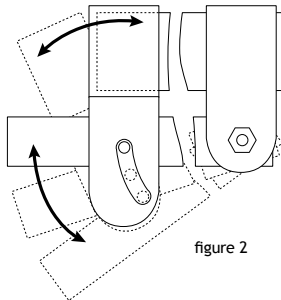


figure 2

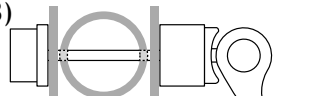
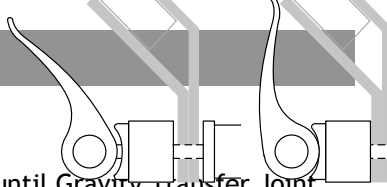


figure 3 - open

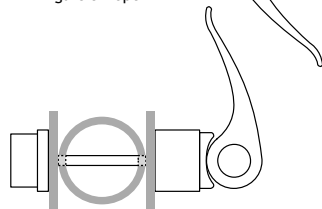


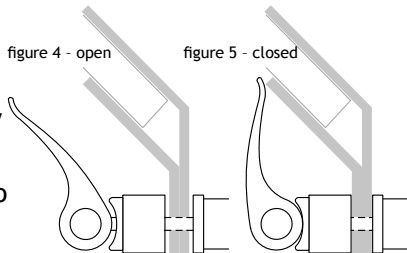
figure 3 - closed

WARNING!

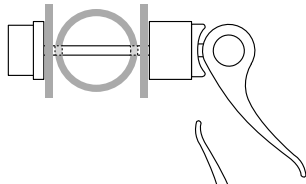
CHECK THAT THE GTJ CAP IS PROPERLY ENGAGED AND QUICK RELEASE SECURELY FASTENED BEFORE USING THE TOWCADDY. FAILURE TO DO SO CAN RESULT IN ACCIDENT OR SERIOUS INJURY.

Attaching Wheels

Insert wheel axle assembly completely into TowCaddy dropout. Close quick release lever, with lever on inside, aimed at ground. A properly adjusted quick release lever should leave an imprint on your palm when the lever is rotated to the closed position. Figures 4 & 5



Verify that tires are inflated to pressure marked on tire side wall.



WARNING!

MAKE SURE WHEELS ARE HELD SECURELY, WITH WHEEL SHAFT FULLY INSERTED INTO DROPOUT RECEIVER. YOU SHOULD NOT BE ABLE TO ROCK OR SHIFT WHEELS. IMPROPERLY INSTALLED WHEELS CAN FALL OFF, CAUSING AN ACCIDENT OR SERIOUS INJURY.

Safety Checklists

Check Before Each Ride:

- Wheels tightly attached and tires inflated to recommended pressure.
- Hitch properly secured.
- Locked retaining pin inserted in hitch.
- Maximum load 25 lbs (12.5 kg) is not exceeded.
- Bicycle safety check, especially brakes and tires.
- All free-hanging golf bag straps and attachments safely secured.
- Golf bag properly secured in cradles with cart straps.
- Helmet for cyclist.

Monthly Checklist

- Inspect hitch, frame tubing, and hardware for damage.
- Inspect tires for wear and cracks.
- Inspect wheels for trueness and cracks.
- Inspect wheel bearings for wear.
- Inspect cart straps for rips, abrasion, or missing or damaged hardware.
- Contact your Authorized TowCaddy Dealer for replacement of any damaged or worn-out parts.

Maintenance and Storage

Hitch and Tow Bar Maintenance

Store TowCaddy indoors if possible. Do not use TowCaddy at temperatures below 32°F (0° C), as road conditions may be icy or unsafe for riding.

Strap Care

Hand wash straps with mild soap or detergent and warm water. For heavy soiling, use a nylon bristle brush. Do not use bleach. Wipe dry (to help avoid mildew) and store out of direct sunlight in a dry, well ventilated area. Replace cut or torn straps.